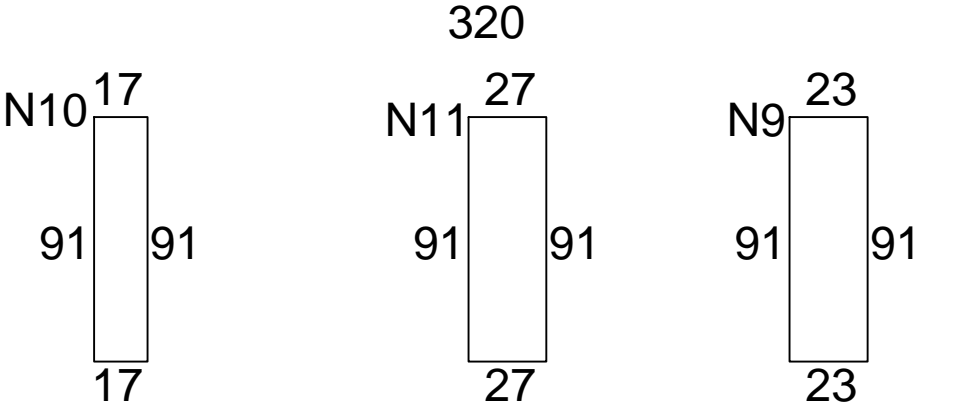
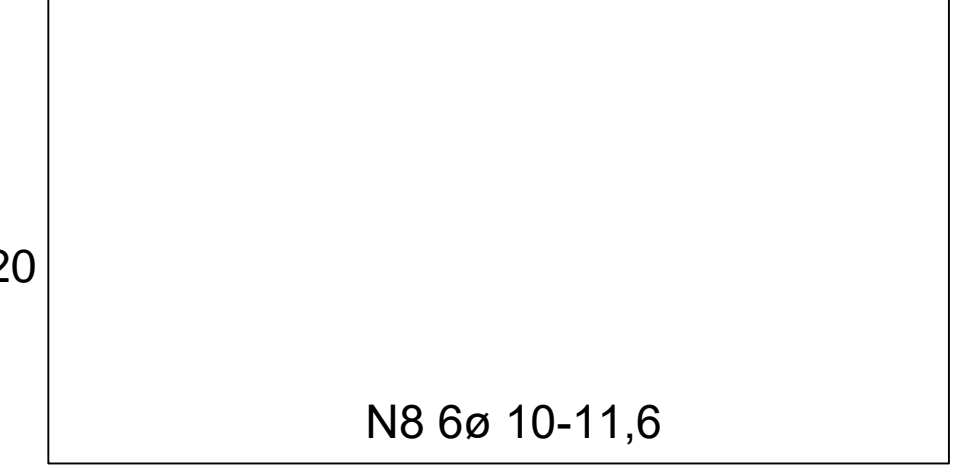
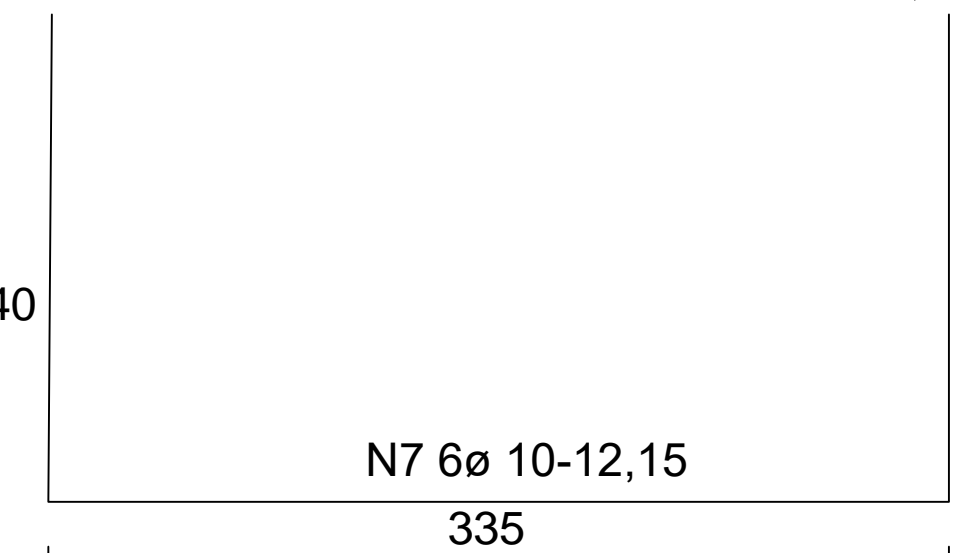
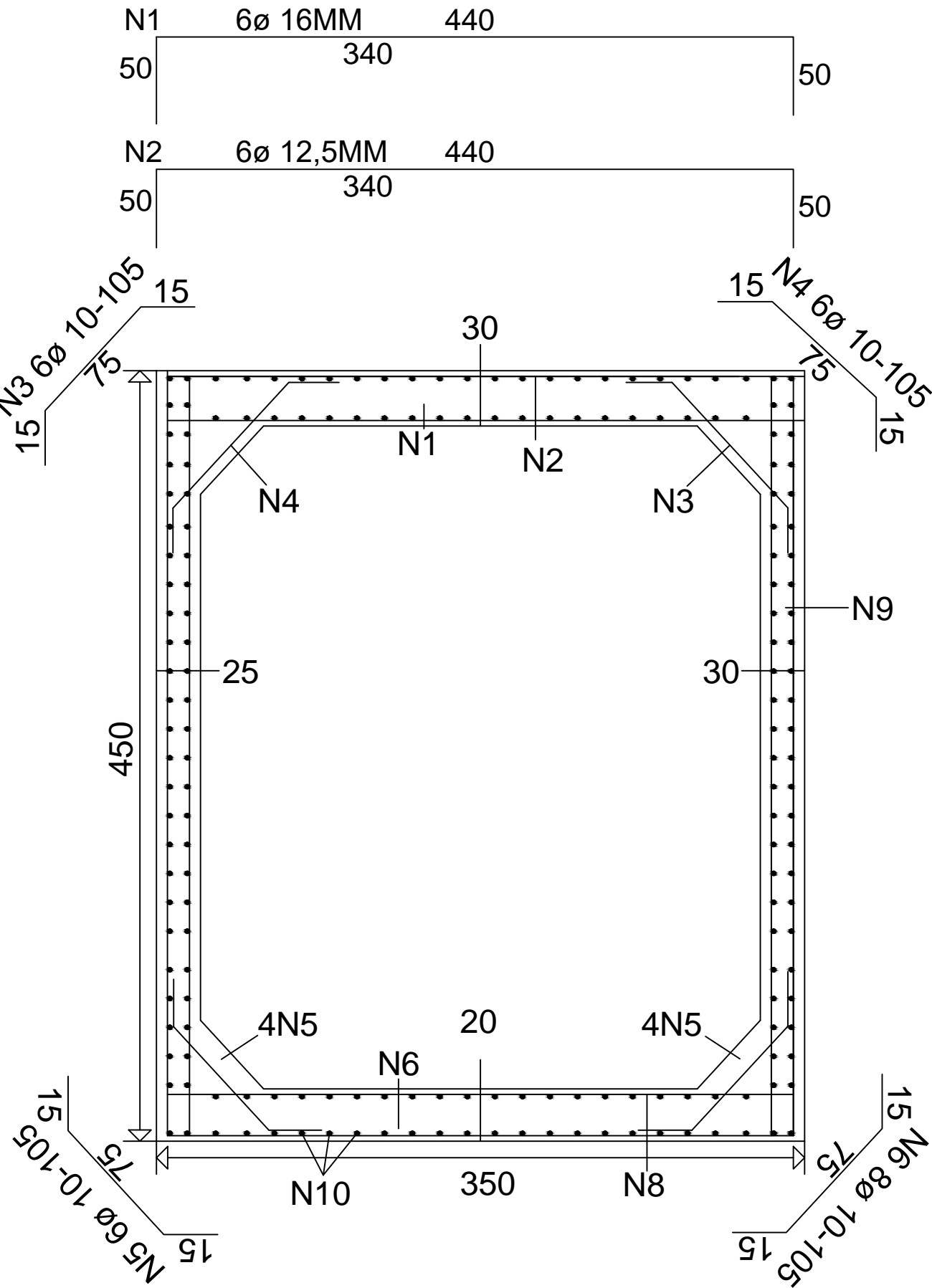
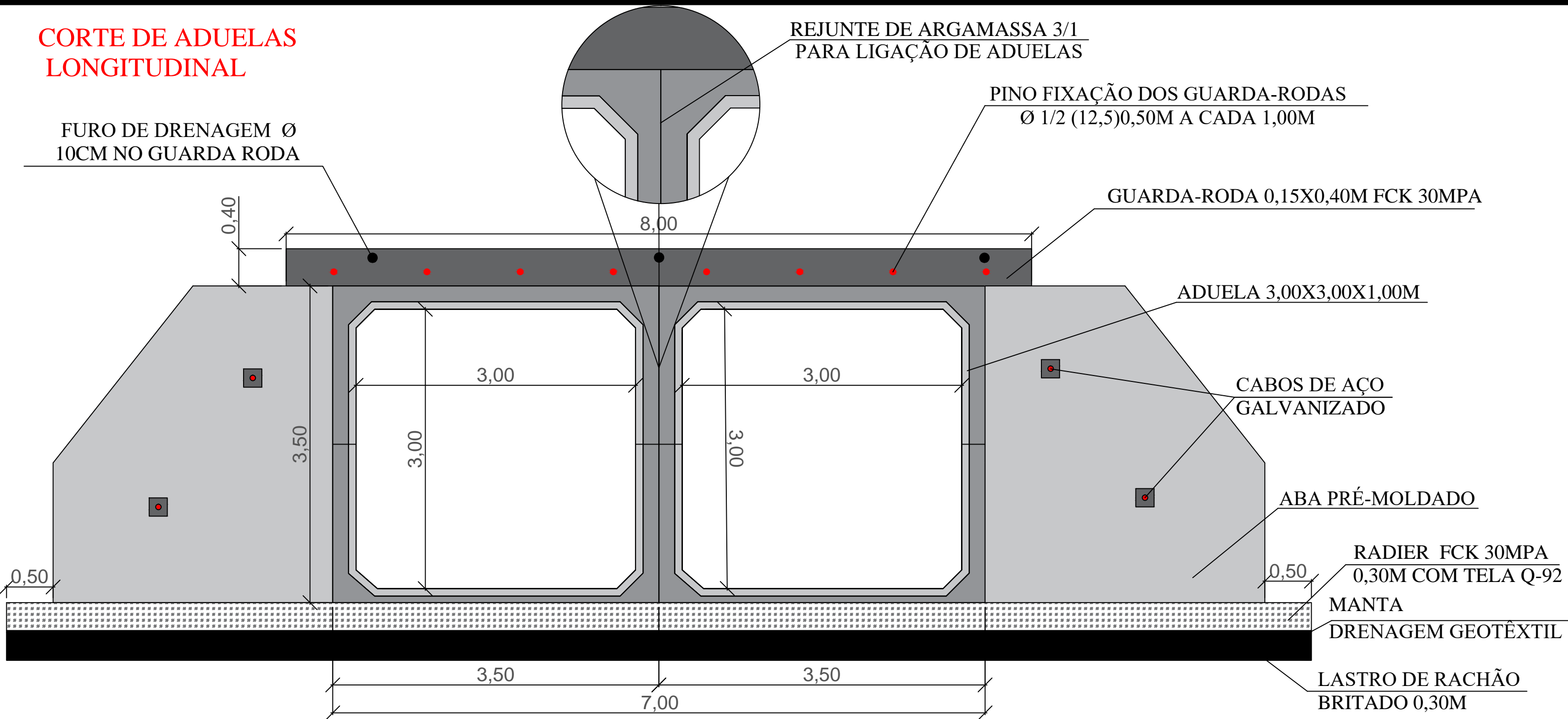


DETALHE ARMADURA

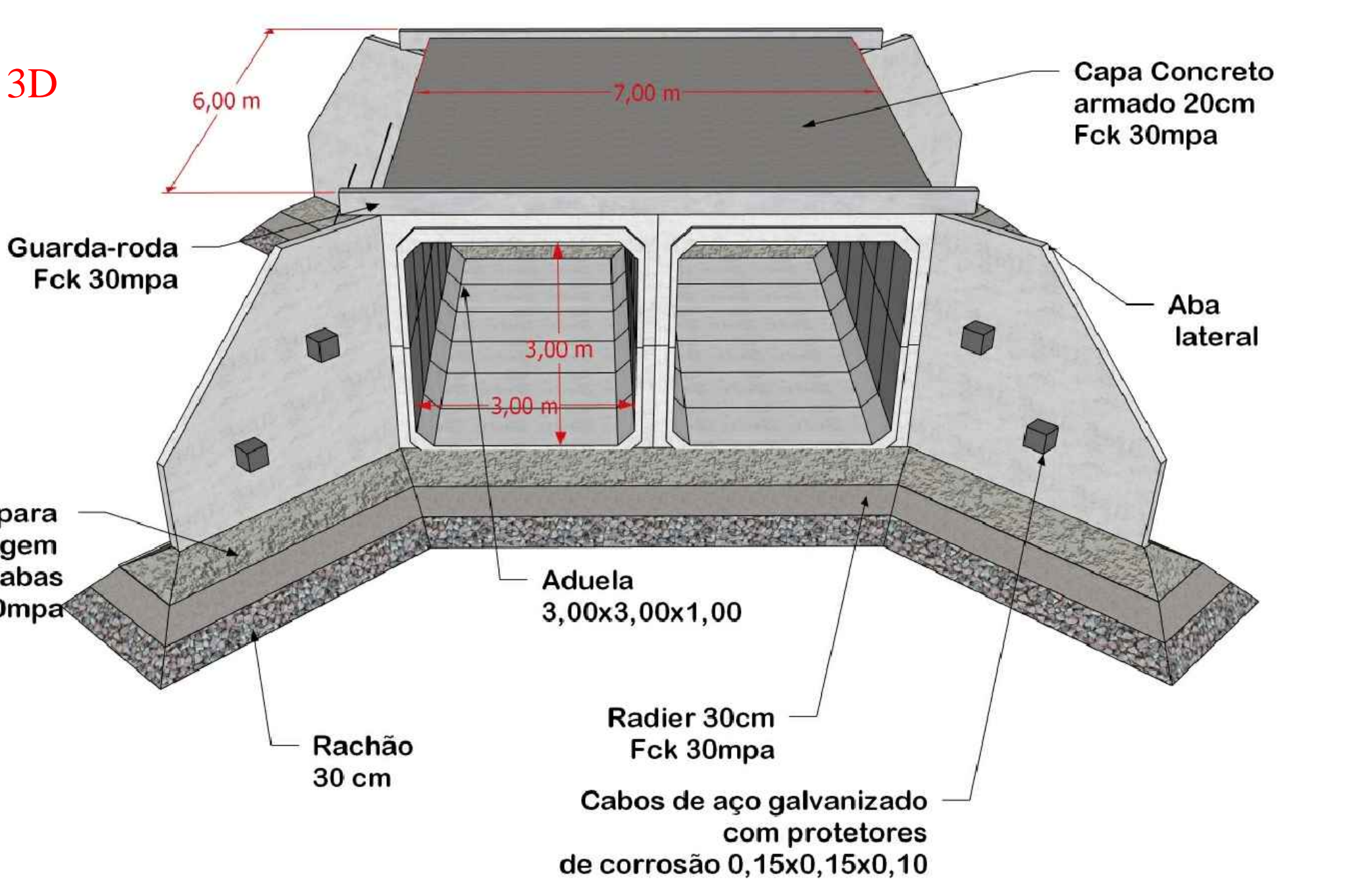
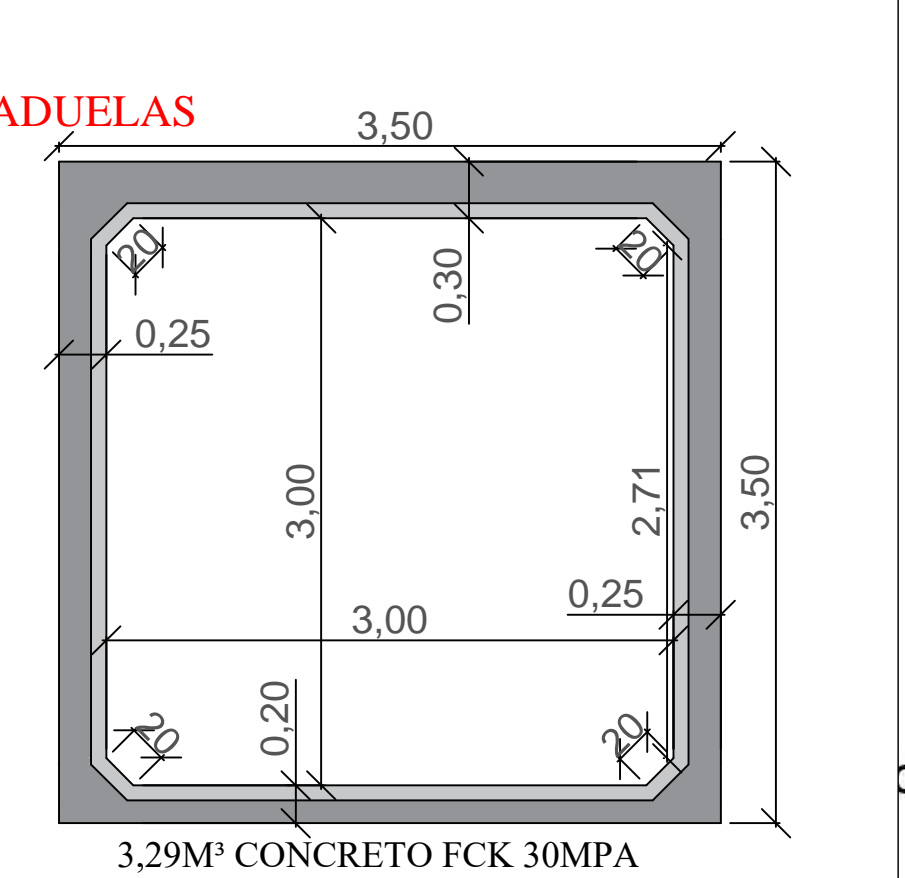
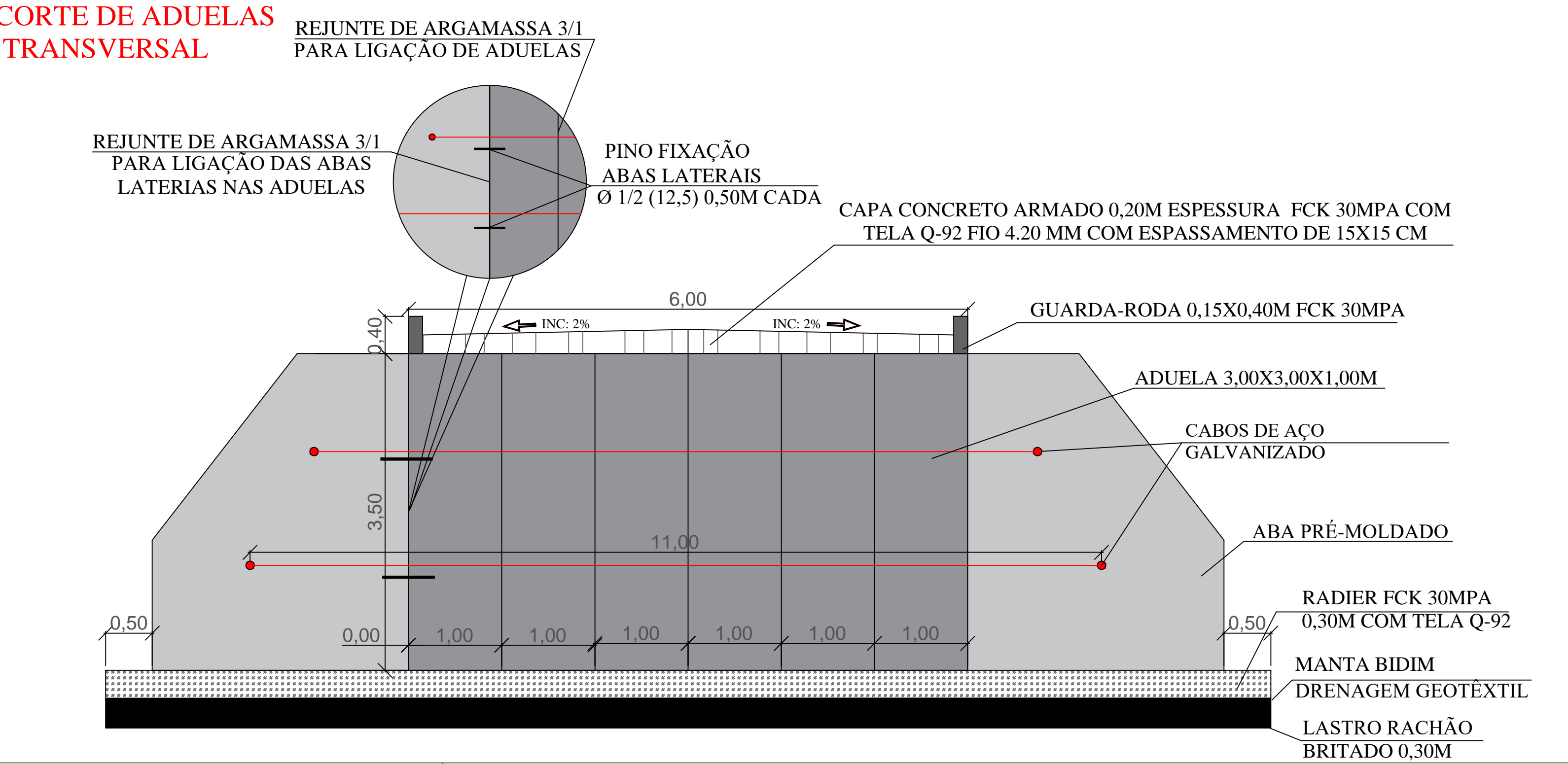


N1	6	16mm	4,40	26,40m	42,24kg
N2	6	12,5mm	4,40	26,40m	26,40kg
N3	6	10mm	1,05	6,30m	3,88kg
N4	6	10mm	1,05	6,30m	3,88kg
N5	6	10mm	1,05	6,30m	3,88kg
N6	6	10mm	1,05	6,30m	3,88kg
N7	6	10mm	12,15	72,90m	45,92kg
N8	6	10mm	11,60	69,60m	43,84kg
N9	30	6,3mm	2,38	71,40m	17,85kg
N10	24	6,3mm	2,26	54,24m	13,56kg
N11	54	6,3mm	2,46	132,84m	33,21kg
TOTAL					238,54kg
+ 10%					262,39kg

CORTE DE ADUELAS LONGITUDINAL



CORTE DE ADUELAS TRANSVERSAL



* ADUELA
Peso concreto armado: 2.5 Ton p/m³
Aduela (concreto fck 30mpa): 3.29m³
Peso por unidade da aduela: 2.5x3.29= 8.225ton
Quantidade total de aduelas: 12un
Obs : Calculo foi executado considerando trem-tipo 45 ton

PROJETO ESTRUTURAL ADUELAS PRÉ-MOLDADAS EM CONCRETO

PROPRIETÁRIO/RESPONSÁVEL:
MUNICÍPIO DE IPORÃ

LOCALIZAÇÃO: ESTRADA SARANI, CÓRREGO BURIM.
PRANCHA: 01/03

PREFEITO MUNICIPAL: ROBERTO DA SILVA

RESP. TÉCNICO: RODRIGO WESLEY MONTORO
ENGENHEIRO CIVIL - 169.235/D

OBSERVAÇÕES:
PONTE DE CONCRETO

ESPAÇO RESERVADO PARA APROVAÇÃO